

Calgary

CRANKMASTERS

Cycling Club

Presents

**The Masters Stampede Road Race Rodeo &
Masters Provincial Road Race Championship
July 13th and 14th 2024 – Madden, Alberta**



The Masters Stampede Road Race Rodeo is sanctioned by the Alberta Bicycle Association.

Thanks to the following sponsors of Calgary Crankmasters Cycling Club:



Alberta
LAMINATIONS

New This Year: Cat 4 Field & Handcycling Field!

For newer racers who don't want to be forced to ride with the Elite field, or are looking for those sweet ABA upgrade points, we will offer a Cat 4 field. We are also offering a handcycling field (races on Sunday only). Any other para athletes are encouraged to contact race organizers if they are interested in participating.

Note: Cat 4 and Handcycling registrants will not be eligible for omnium prizing.

Overview

The Stampede Road Race Rodeo is a Masters level omnium event to promote the sport of cycling throughout all ages of competition. Over 3 stages in the rolling hills around Madden, cyclists of all ages will compete for a common prize pool which rewards excellence at any age.

The Masters Stampede Road Race Rodeo consists of 3 events, each designed to favour different types of racer:

1. The Stampede Road Race Masters Provincial Championship on Saturday July 13th
2. The Pedalhead ITT early on Sunday July 14^h
3. The Madden Dash in the early afternoon on Sunday July 14th

On Saturday, The Stampede Road Race Masters Provincial Championship is one for the climbers. A testing 23.5 km circuit contains almost 300m of climbing per lap, with up to 5 ¼ laps for the Elite field.

On Sunday, with our provincial road race champions crowned, each racer will complete one lap of a shorter course solo in the race against the clock. All times will be adjusted by age and sex, and then combined into a single results list to find the best Masters time-trialer in the province!

A second shorter road race with only one hill to climb will conclude the weekend. This time the finish line is on the flats, and with fewer laps, a neutralized hill climb on the first lap, and 8 km of downhill/flats to catch back up, this event should favour the sprinters.

Lastly, we will combine points from all categories, and crown an overall Masters Road Race Rodeo Champion!

Race Organizers

Race Directors: Callum Galbraith cfgalbraith@gmail.com
David Mulligan

Registration

On-line via Zone 4, www.zone4.com or follow link on www.calgarycycling.com. There will be no race day registration. Single Event licenses will not be available.

Registration closes at 11:59 pm on Thursday, July 11th.

Racer Categories

Race Age = 2024 – year of birth.

- Elite/Open Women & Men (Cat 1/2/3/4/5 Women/Men)*
- Masters Women & Men 35-44
- Masters Women & Men 45-54
- Masters Women & Men 55-64
- Masters Women & Men 65+
- Junior Women & Men *
- U17 Women & Men *
- Cat 4 *, not eligible for omnium prizing
- Citizen *, not eligible for omnium prizing
- Handcycling *, not eligible for omnium prizing – Sunday only (Pedalhead TT and Madden Dash).

* Not Provincial Championships for the Stampede Road Race

What License Do I Need?

Riders possessing the following types of licenses are eligible to compete in the Stampede Road Race Rodeo/Masters' Provincial Championship Road Race:

- UCI license issued by the Alberta Bicycle Association, other provincial cycling association, or other national cycling federation.
- Citizen license issued by the Alberta Bicycle Association.
- To compete in the Masters' categories, riders aged 35 and over must have a Master's designation (and not Elite) on their license.

Only those riders possessing licenses issued by the Alberta Bicycle Association are eligible for medals at the Master's Provincial Championship Road Race.

No Single Event / Day licenses are offered for this event.

ABA Upgrade Points

ABA upgrade points are available for participants in the Cat 4 field only. This will be an ABA Schedule A event meaning points for 1st place to 10th place as follows: 25, 20, 15, 12, 10, 8, 6, 4, 2, 1.

All master's/Junior groups are not eligible for ABA upgrade points, but will earn ABA Road Cup points (also on Schedule A).

Entry Fees

	Event	Early Bird (*)	Standard (**)	Last Chance (***)
Senior	Stampede Road Race	\$70	\$85	\$95
	Pedalhead ITT	\$40	\$45	\$50
	Madden Dash	\$40	\$45	\$50
	Omnium (all 3 events)	\$120	\$140	\$160
Citizen	Stampede Road Race	\$50	\$65	\$75
	Pedalhead ITT	\$35	\$40	\$45
	Madden Dash	\$35	\$40	\$45
	Omnium (all 3 events)	\$80	\$100	\$120
Junior/U17	Stampede Road Race	\$40	\$45	\$50
	Pedalhead ITT	\$30	\$35	\$40
	Madden Dash	\$30	\$35	\$40
	Omnium (all 3 events)	\$60	\$65	\$70
Handcycle	Pedalhead ITT & Madden Dash	\$50	\$60	\$70

* Early Bird fees end at midnight on Sunday June 30th.

** Standard fees end at midnight on Monday July 8th.

** Last Chance fees end at midnight on Thursday July 11th.

You must show your license at sign on. If you are unable to do so you will incur a fine.

Omnium Points

Racers will earn omnium points based on their placing within their category for the two mass start events, dependent on field size (**). The smaller the field size, the fewer points will be awarded as higher placements are easier to achieve.

Omnium Points (Mass Start)																					
		Place in Race Cat (Women&Men,U17/Junior/Elite/Open/Masters)																			
		1	2	3	4	5	6	7	8	9	10	11	12	13	14	15	16	17	18	19	20+
Field Size (# of Racers)**	20+	35	30	26	22	19	16	13	11	9	7	5	4	3	2	1	1	1	1	1	1
	19	35	30	26	22	19	16	13	11	9	7	5	3	2	1	1	1	1	1	1	1
	18	35	30	26	22	19	16	13	10	8	6	4	2	1	1	1	1	1	1	1	1
	17	35	30	26	22	18	15	12	9	7	5	3	1	1	1	1	1	1	1	1	1
	16	35	30	25	21	17	14	11	8	5	3	1	1	1	1	1	1	1	1	1	1
	15	35	30	25	20	16	12	9	6	3	1	1	1	1	1	1	1	1	1	1	1
	14	35	30	25	20	16	12	9	6	3	2	2	2	2	2	2	2	2	2	2	2
	13	35	29	24	19	15	11	8	5	2	2	2	2	2	2	2	2	2	2	2	2
	12	34	28	23	18	14	10	6	3	2	2	2	2	2	2	2	2	2	2	2	2
	11	34	28	23	18	13	9	5	2	2	2	2	2	2	2	2	2	2	2	2	2
	10	34	28	22	17	12	8	4	3	3	3	3	3	3	3	3	3	3	3	3	3
	9	33	26	20	15	10	6	2	2	2	2	2	2	2	2	2	2	2	2	2	2
	8	33	26	19	13	8	4	3	3	3	3	3	3	3	3	3	3	3	3	3	3
	7	33	25	18	12	7	3	3	3	3	3	3	3	3	3	3	3	3	3	3	3
	6	33	25	18	12	7	4	4	4	4	4	4	4	4	4	4	4	4	4	4	4
	5	33	25	18	12	7	7	7	7	7	7	7	7	7	7	7	7	7	7	7	7
	4	32	23	16	10	10	10	10	10	10	10	10	10	10	10	10	10	10	10	10	10
	3	31	21	14	14	14	14	14	14	14	14	14	14	14	14	14	14	14	14	14	14
	2	30	19	19	19	19	19	19	19	19	19	19	19	19	19	19	19	19	19	19	19
	1	29	29	29	29	29	29	29	29	29	29	29	29	29	29	29	29	29	29	29	29

** Field size is defined as the number of racers in their category who sign on to race. If racers register, but do not sign on, they are not included in the field size. If multiple categories are combined in a single peloton on race day, field size is not the number of racers in the peloton, but the number of racers within a given racer's race category.

For the Pedalhead ITT, racer's finishing times are adjusted based on age and sex. All racers are placed in a single order to earn omnium points. For each racer, raw times will be scaled by the following amounts based on age and sex:

Time Trial Adjustment Factors *		
Age	Women	Men
Under 35	0.86	1
35 - 39	$0.860 - (\text{Age} - 34) * 0.004$	$1.000 - (\text{Age} - 34) * 0.004$
40 - 49	$0.835 - (\text{Age} - 40) * 0.005$	$0.975 - (\text{Age} - 40) * 0.005$
50 - 59	$0.784 - (\text{Age} - 50) * 0.006$	$0.924 - (\text{Age} - 50) * 0.006$
60 - 69	$0.720 - (\text{Age} - 60) * 0.010$	$0.860 - (\text{Age} - 60) * 0.010$
70+	$0.615 - (\text{Age} - 70) * 0.015$	$0.755 - (\text{Age} - 70) * 0.015$

* Factors have been determined by examining the times of the top half of the field in each age category in the Juventus Provincial Championship ITT from 2013 to 2019, and an ongoing review of times recorded in past year's Pedalhead ITTs.

Once times have been adjusted, all racer's times will be put in a single field order, and omnium points will be awarded as follows:

Omnium Points (Time Adjusted ITT)																				
Place	1	2	3	4	5	6	7	8	9	10	11	12	13	14	15	16	17	18	19	20
Points	40	38	36	34	32	30	29	28	27	26	25	24	23	22	21	20	19	18	17	16
Place	21	22	23	24	25	26	27	28	29	30	31	32	33	34	35	36	37	38	39	40+
Points	15	14	13	12	11	10	9	8	7	6	5	5	4	4	3	3	2	2	1	1

Although there will be separate omnium prize pools for women and men, for the ITT both women's and men's results will be combined to determine omnium points.

Prizes For Omnium

Total prizing will be determined after registration closes; you must complete all 3 events to be eligible for omnium prizing. Citizen Category racers are not eligible for prizing, podium ceremony only.

We will have separate Omnium podiums, and prize money, for women and men.

There will be a communique to all registered racers before the event starts defining the prize amounts.

* All racer's point totals will be ranked for a two prize pools, one for women, and one for men.

** Times in the ITT will be adjusted by racer age and sex, with all results combined in a single list from which omnium points are awarded. Points are awarded per race category in the mass start road races dependent on field size.

*** First tie breaker is points earned in the ITT, second tie breaker is points earned in the Stampede Road Race, third tie breaker is raw time in the ITT, after that we declare a tie.

**** There is additional prizing available in individual events. See event summaries for details!

Awards

Podium presentations will be held as soon as possible after each event. Omnium Podium will be held following the last event. **You are expected to arrive for your podium presentation wearing Team clothing.**

Regulations/Anti-Doping/Racer Conduct

This event will be run under UCI, CCC & ABA Race Regulations. Racers are responsible to read and understand these regulations. They can be found [here](#).

The ABA complies with and fully supports the UCI anti-doping regulations, the clauses of the World Anti-doping Code and its international Standards to which the UCI anti-doping regulations refer and to the anti-doping regulations of other competent bodies per the regulations of the UCI.

Unsportsmanlike conduct will not be tolerated, including but not limited to public urination, littering, use of profane language and verbal/physical abuse of officials/racers/volunteers/general public.

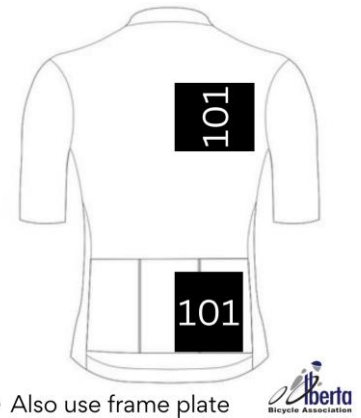
Numbers

PLEASE BRING YOUR CURRENT ALLOCATED RACE NUMBERS!

If you do not bring race numbers allocated to you this year then you will be charged \$10 for a new set of number. If you have not been allocated race numbers this year you can collect them on site.

Please bring pins and zip ties!

Placement - right hip and right side rib cage below arm (to be confirmed by ABA on race day). Please ensure you place your pin on numbers correctly so the photo finish camera can see your number. Frame plate on seat post.

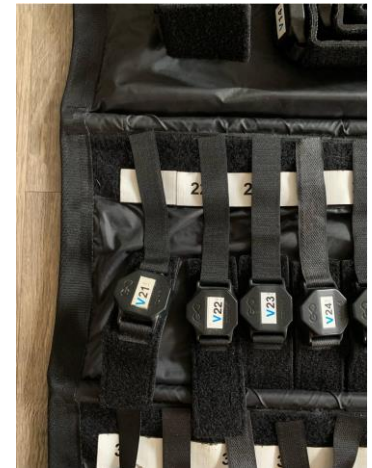


• Also use frame plate

Race Timing Chip

The race timing chip will be securely attached to your bicycle. Chips are not to be placed on the rider's body.

Participants who lose their chip, or fail to return the timing chip, will be invoiced \$75 by the ABA for the replacement cost.



Warm ups/Cool downs

Warm ups and cool downs must not be done on the race course while races are in progress. There are good roads to the south of the community hall, and all racers are requested to warm up/cool down south of the hall.

Finish Line Area

For the safety of racers, officials, and the public, **please do not stop or congregate near the finish line.** After your race, results should be available on Zone4, or via paper posting at the community hall. Please enjoy your post race discussions/analysis at the hall!

Once your race is complete, please do not ride over the finish line again to ensure your race timing chip does not generate additional hits, and make sure you return the timing chip!!!

If you want to watch later finishes, **you and your bicycle must be completely off the road** (in the grass).

Directions

Sign-on at Madden Community Hall, on Rge30, north of Hwy574.

From Calgary: Hwy2 north to Crossfield, exit 295 to Hwy2A, through Crossfield to Hwy574, 16 km west to Madden. Or, take Symons Valley Road (Hwy772), or Hwy766 north from Calgary to Madden.

From Edmonton: Hwy2 south to exit 305 to Twp292, turn right on Twp292, at 22 km turn left on Rge30, 4 km to the Madden Community Hall.

Parking: Do not park on race course. There is parking available at the Madden Community Hall.

First Aid

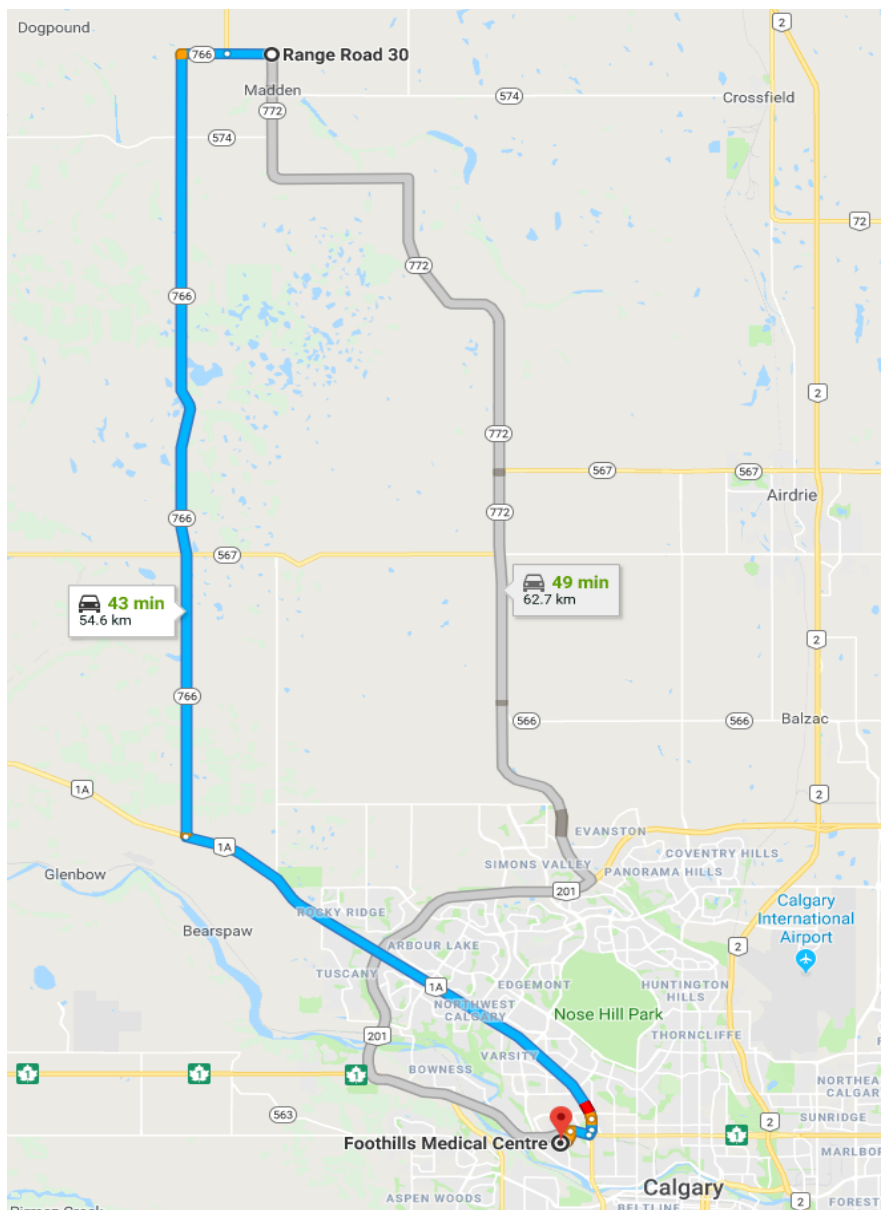
EMS will be on site stationed at the start line. The nearest hospital is Foothills Hospital, 1403 29 Street NW, Calgary. There are also emergency medical centres in Airdrie and Cochrane.

Directions to Foothills Hospital

1403 29 Street NW Calgary, Alberta T2N 2T9

From Start on SW corner of course: 55 km, 43 minutes

Head west on Twp290
Head south on Hwy766
Head east on Hwy1A
Head west on 16th Ave NW
Head south on 29th St NW



Event Details: Stampede Road Race - Saturday July 13th 2024

Sign-on

At the Madden Community Hall (Rge30, north of Hwy574) opens at 8:30 am for the morning races, and 11:00 am for the afternoon races. You must sign on at least 15 minutes before your race start time.

Course

Due to scheduled roadworks on Rge35A, there is a chance that we will not be able to race the full course. We are currently planning two potential race days, we will race the long version if we can, or the short version otherwise. The short version was still a great race day when we did this in 2022, and with more climbing and a hill top finish is different in character than Sunday's races will be.

Short Course (Backup Plan)

Twp290 west, Hwy766 north
Twp292 east, Rge30 south

The race will run in a clockwise direction. One lap of the course is approximately 9.75 km.

Start: The intersection of Twp290 and Rge30. Racers will assemble off the course on Twp290, east of Rge30.

Finish: On Hwy766, approximately 900m north of Twp290. No parking at the finish line (except for race officials).

Feed Zone: Feed zone location is on Twp290. You can walk there from the Hall (2km), or Corner 1 (1km), or park on Rge31 south of Hwy766.
Park in designated zone only. Do NOT park on private driveways/access roads!

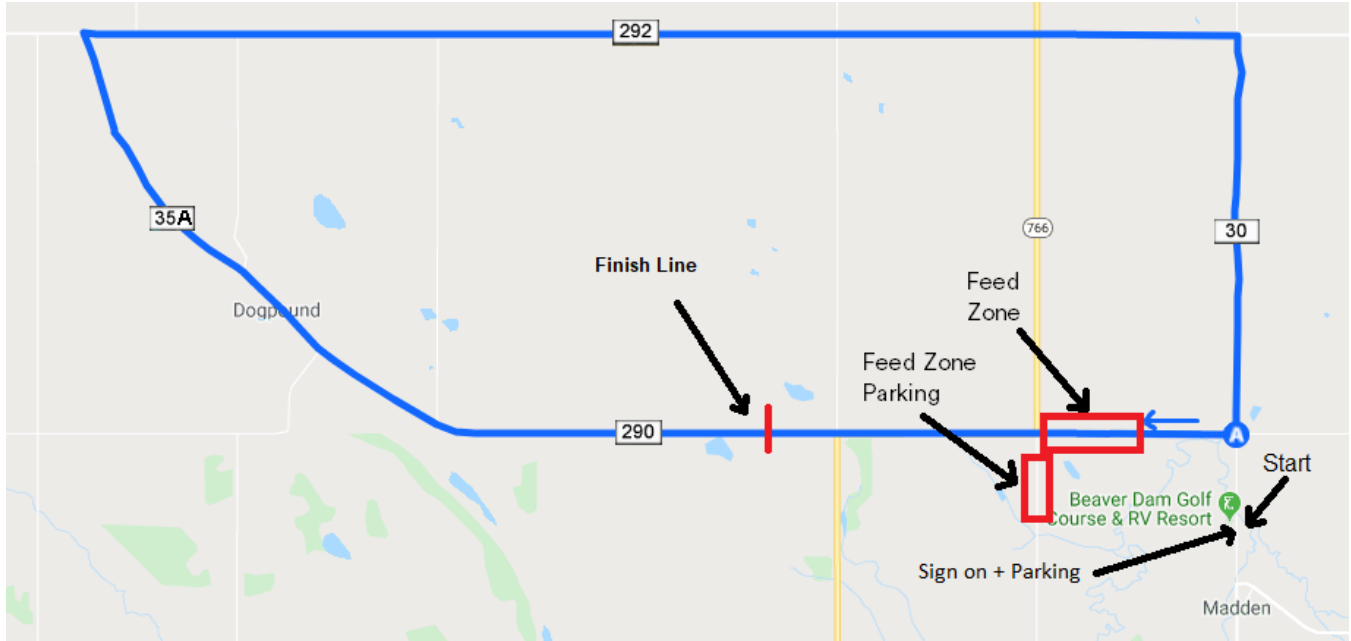


Event Staff: Course Marshalls will be stationed at corners and intersections and will be wearing reflective vests and holding signs. It is each racer's responsibility to know and follow the race course. The roads will not be closed to traffic.

Approximate Course Profile: Starts at the start line, lap counting begins once crossing the finish line for the first time.



Long Course (Preferred but not certain)



Twp 290 west, RR 34A/35A northwest, Twp 292 east, RR 30 south. The race runs in a clockwise direction. One lap of the course is 23.5 km.

Start: Intersection of Twp290 and Rge30. Race groups will assemble at the Madden Hall.

Finish: Twp290, approximately 4km west of start. No parking at the finish line (except for race officials).

Feed Zone: Feed zone location is on Twp290. You can walk there from the Hall (2km), or Corner 1 (1km), or park on Rge31 south of Hwy766.

Park in designated zone only. Do NOT park on private driveways/access roads!

Event Staff: Course Marshalls will be stationed at corners and intersections and will be wearing reflective vests and holding signs. It is each racer's responsibility to know and follow the race course. The roads will not be closed to traffic.

Course Profile: Begins at start line, lap counting begins once crossing the finish line for the first time.



Distances and Proposed Riding Groups (Short Course Option)

Groups are dependent on numbers. Any adjustments will be communicated ahead of the race.

Race Categories	Laps – Distance	Start Time	Duration	Est. End Time
Women (most categories)*	4 Laps – 41.5 km	9:15 AM	1:05 – 1:25	10:20-10:30
Women & Men U17	2 Laps – 22 km	9:18 AM	0:35 – 0:55	9:53-10:12
Citizen	2 Laps – 22 km	9:20 AM	0:35 – 0:55	9:55-10:15
Men 55-64, 65+	4 Laps – 41.5 km	10:30	1:00 – 1:20	11:30-11:50
Men Junior, 45-54	5 Laps – 51.25 km	11:45	1:15 – 1:45	1:00-1:30
Men Elite, 35-44	6 Laps – 61 km	1:20	1:25 – 2:00	2:45-3:20
Men Cat 4	3 Laps – 31.75 km	1:23	0:45 – 1:00	2:08-2:23

* Women may choose to race in Masters Men 35-44 field if they prefer. In that case their Omnium points will be judged on their placing in that field. TT time adjustments, placing, and omnium points for the ITT event will still be calculated based on the corresponding adjustment for Women.

Mixed groups will be asked to put colored flagging tape to their seat posts so you can identify who they are directly competing against.

Distances and Proposed Riding Groups (Long Course Option)

Groups are dependent on numbers. Any adjustments will be communicated ahead of the race.

Race Categories	Laps - Distance	Start Time	Est. End Time
Men U17, 55-64, 65+	2 Laps – 52 km	9:30 AM	10:50-11:15
Women (all categories)*	2 Laps – 52 km	9:35 AM	11:00-11:25
Citizen	1 Laps – 28 km	9:40 AM	10:30-11:00
Men Elite, 35-44	4 Laps – 99 km	12:00 PM	2:30-3:05
Men Cat 4	3 Laps – 75 km	12:05 PM	2:00-2:30
Men Junior, 45-54	3 Laps – 75 km	12:10 PM	2:15-2:50

* Women may choose to race in Masters Men 35-44 field if they prefer. In that case their Omnium points will be judged on their placing in that field. TT time adjustments, placing, and omnium points for the ITT event will still be calculated based on the corresponding adjustment for Women.

Mixed groups will be asked to put colored flagging tape to their seat posts so you can identify who they are directly competing against.

Event Vehicles

Wheel Vehicles: There will be a vehicle carrying neutral wheels. Wheels in the wheel vehicles are neutral i.e. non-team-specific. The wheel vehicle will service you from behind on the right side of the road and you are responsible for changing your own wheel. Make sure you get a suitable wheel, with the correct cogset & brakes. Also ensure that if you need a tool to change your wheel, that you provide it with your spare wheelset.

You will not get any drafting to help you back to the group. The provision of neutral service in Alberta road races is entirely dependent on receiving an adequate supply of wheels from teams and racers.

If there are no matching spare wheels for your bike in the wheel car, we will make sure you get a ride back to the hall, but you may have to wait some time for a vehicle to come pick you up. We will be sweeping the course periodically throughout the day, and any vehicle unable to service you should communicate this information to the race organization.

Food

Racers are asked to be self-sufficient in terms of bringing their required nutrition and water supplies for the road race. There will be food available for racers on Sunday between the last two events.

Awards

Awards will be held post-race at the Madden Community Hall. Note cool down return ride to Madden Hall puts you back on course. Don't interfere with ongoing races. Protests must be made to the Chief Commissaire within 15 minutes of results being posted at the event.

Provincial Championship medals will be awarded to the podium in all Masters Age categories. Winner's medals will be awarded to all other categories.

You are expected to arrive for your podium presentation wearing Team clothing.

Event Details: Pedalhead Individual Time Trial - Sunday July 14th 2024

License Check

Number/chip pickup and license check if you do not already have them - no sign on required for ITT: 8:30 am to 10:00 am. Madden Community Hall, on Rge30, north of Hwy574.

Course

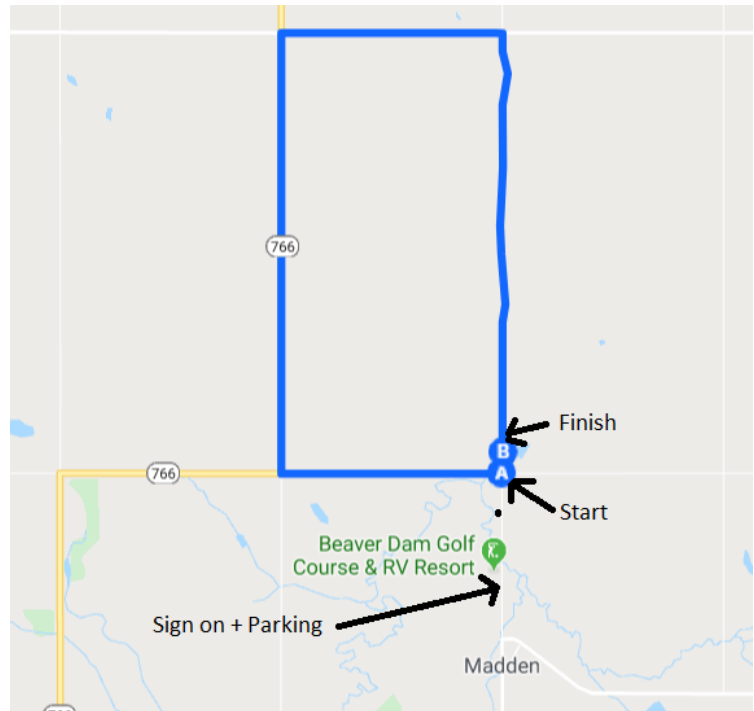
Twp290 west, Hwy766 north
Twp292 east, Rge30 south.

The race will run in a clockwise direction. Length of the course is approximately 9.75 km.

Start: The intersection of Twp290 and Rge30. Racers will assemble off the course on Twp290, east of Rge30.

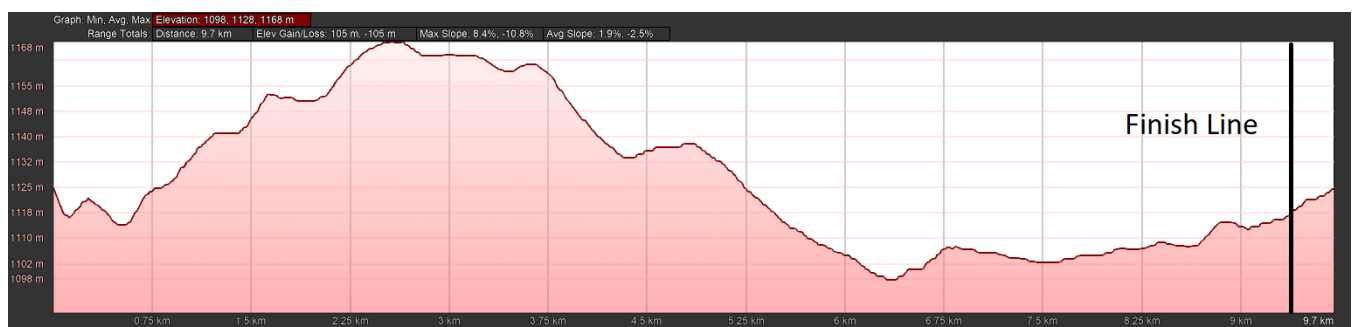
Finish: On Rge30, approximately 150m north of Twp290. No parking at the finish line (except for race officials).

Feed Zone: With the short course length, there will be no feed zone.



Event Staff: Course Marshalls will be stationed at corners and will be wearing reflective vests and holding signs. It is each racer's responsibility to know and follow the racecourse. The roads will not be closed to traffic.

Approximate Course Profile:



Timing Chips

We will use timing chips for the ITT. The race timing chip will be securely attached to your bicycle. Chips are not to be placed on the rider's body.

Distances and Start Order

All racers will complete one lap of the course. First racer will depart at 9:00am, subsequent racers at 30s intervals.

Rider Start Times

Will be posted on zone4.ca Friday 7th at 8pm and at License Check.

Event Vehicles

Broom Wagon: There will periodically be a broom wagon sweeping the course in the event any racers have a mechanical incident that they cannot recover from.

Cash Prizing

There will be two \$100 cash prize for the fastest adjusted time of the day for women and for men.

Awards

In addition, there will be draw prizes provided by our sponsor Pedalhead Bicycle Works.

Podiums will be held post-race at the Madden Community Hall. Please do any cool down ride south of the course toward Madden so that you do not interfere with any racers on course!

Protests must be made to the Chief Commissaire within 15 minutes of results being posted at the event.

You are expected to arrive for your podium presentation wearing Team clothing.

Event Details: Madden Dash – Sunday July 14th 2024

Sign-on

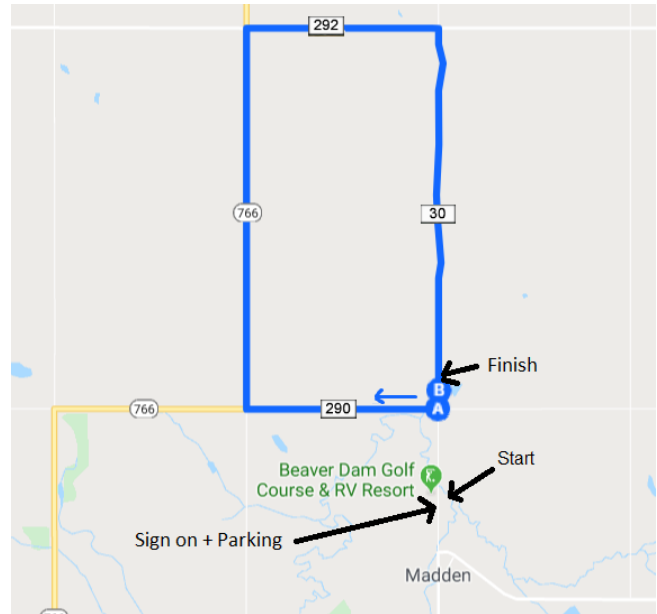
Sign on: 8:30 am to 1:30 pm. Madden Community Hall, on Rge30, north of Hwy574. You must sign on at least 15 minutes before your race start time.

Course

Course is the same as used for the Pedalhead ITT, however the start will be from the Madden Hall, and the west bound section of the course (the opening hill) will be ridden as a neutral zone on the first lap.

No FeedZone

Note there will be no feeding during the Madden Dash, so there is no feed zone.



Distances and Start Order

Race Categories	Laps - Distance	Start Time	Est. End Time
Men Elite, 35-44	4 Laps – 39 km	10:45 AM	11:40-11:50
Men U17, 55-64, 65+	2 Laps – 19 km	11:45 AM	12:15-12:25
Women (all categories)*	2 Laps – 19 km	12:10 PM	12:40-12:45
Men Junior, 45-54	3 Laps – 29 km	12:45 PM	1:25-1:35
Men Cat 4	2 Laps – 19 km	1:30 PM	2:00-2:05
Citizen, Handcycle	1 Lap – 9.5 km	1:45 PM	2:05-2:10

Food

Meal for all volunteers and racers will be BBQ Beef on a Kaiser from All Beef Catering.

Event Vehicles

Wheel Vehicles: There will be a vehicle carrying neutral wheels. Wheels in the wheel vehicles are neutral i.e. non-team-specific. The wheel vehicle will service you from behind on the right side of the road and you are responsible for changing your own wheel. Make sure you get a suitable wheel, with the correct cogset. You will not get any drafting to help you back to the group. Neutral Service The provision of neutral service in Alberta road races is entirely dependent on receiving an adequate supply of wheels from teams and racers.

Awards/Cash Prizing

For the stray cattle who like to wander ahead of the herd, for each peloton (not for each race category), we will be awarding a Lone Bull prize of \$50 to the first racer over the line at the end of the first lap. Note that as we neutralize the first hill ascent on this lap, this will be one for either the sprinters or the breakaway artists!

Podiums for both the Madden Dash, and the overall Omnium, will be held post-race at the Madden Community Hall. Please do any cool down ride south of the course toward Madden so that you do not interfere with any racers on course! Protests must be made to the Chief Commissaire within 15 minutes of results being posted at the event.

You are expected to arrive for your podium presentation wearing Team clothing.